



# RHINO-RACK

Aerodynamic & Heavy Duty Roof Rack Systems

## RSS150 - SUZUKI Swift 4dr Hatchback 01/05 on

Place these instructions in the vehicle's glove box after installation is complete.

**Important:** Please read these instructions carefully prior to installation.  
Please refer to your fitting instruction to ensure that the roof racks are installed in the correct locations.  
Check the contents of kit before commencing fitment and report any discrepancies

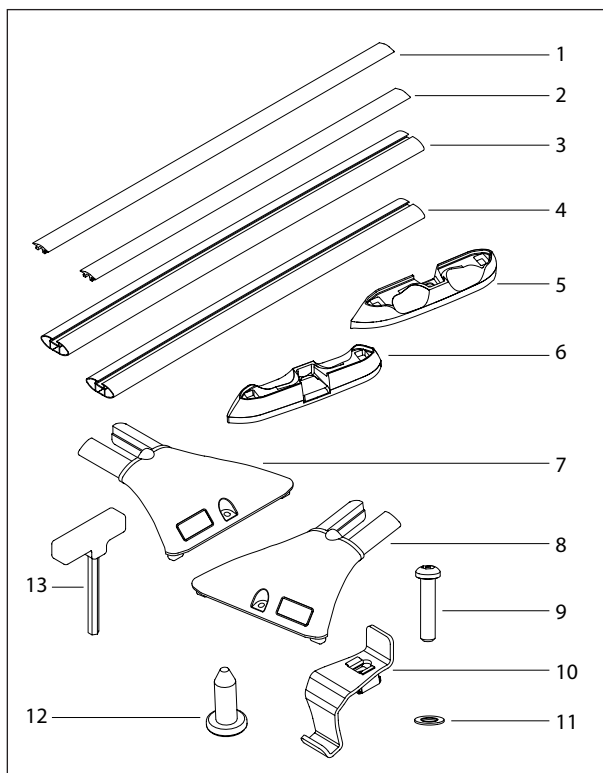
### Parts List

Maximum carrying capacity: 50kg

Item	Component Name	Qty	Part No.
1	Buffer Strip FRONT	1	R011
2	Buffer Strip REAR	1	R011
3	Sportz Cross Bar FRONT 825mm	1	A155
4	Sportz Cross Bar REAR 790mm	1	A155
5	Swift Roof Pad RIGHT	2	M019
6	Swift Roof Pad LEFT	2	M018
7	RSS Sportz Leg RIGHT	2	M014
8	RSS Sportz Leg LEFT	2	M013
9	M6 x 32 Security Screw	4	B064
10	Swift Leg Strap with cage nut	4	C449
11	M6 x 12.5mm Flat Washer	4	W003
12	10G x 1/2" Phillips Screw	4	B045
13	5mm Security Allen Key	1	Seckey-S
14	Fitting Instruction	1	RS-102

### Tools Required;

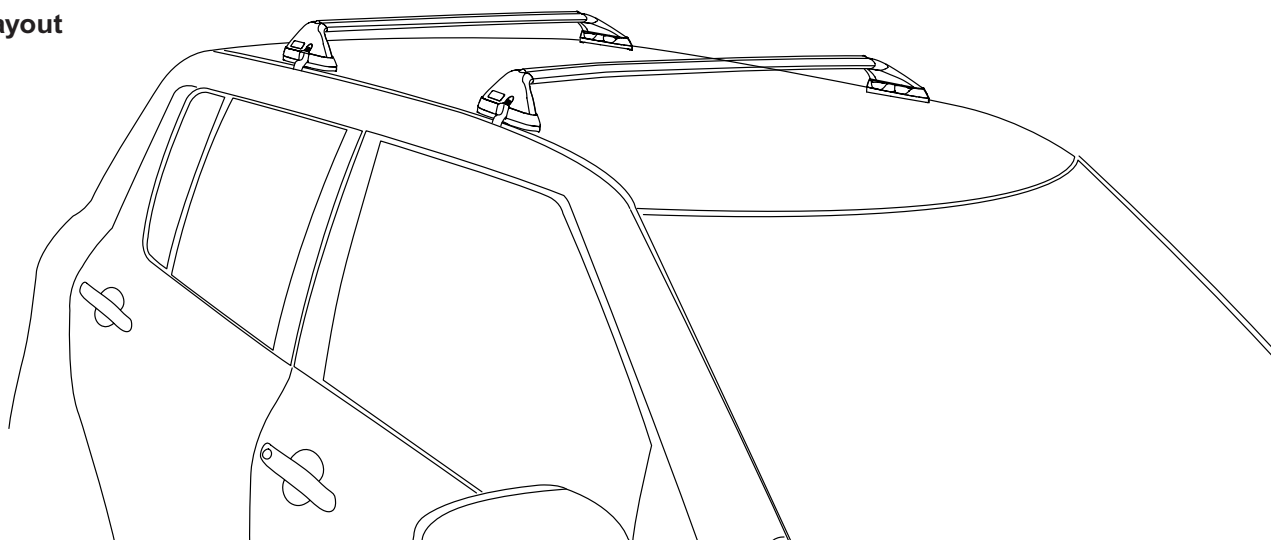
Allen key, included in kit.  
Phillips Head Screwdriver.  
Rubber Mallet.



### IMPORTANT Care Instruction:

Wash and clean the roof mounting area prior to fitting the Sports roof racks. PLEASE READ THROUGH INSTRUCTIONS BEFORE FITTING.

### Layout

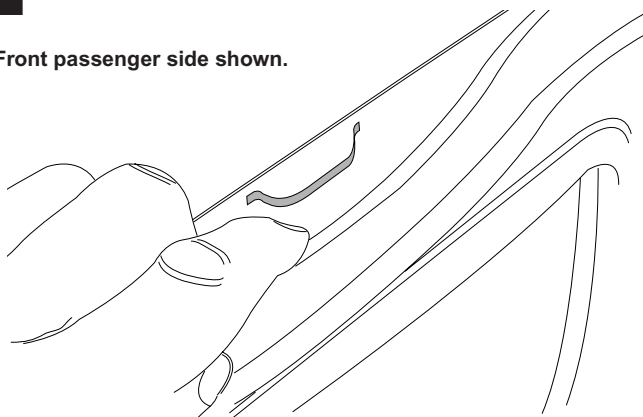




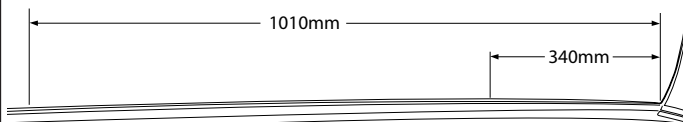
## RSS150 - SUZUKI Swift 4dr Hatchback 01/05 on

1

Front passenger side shown.

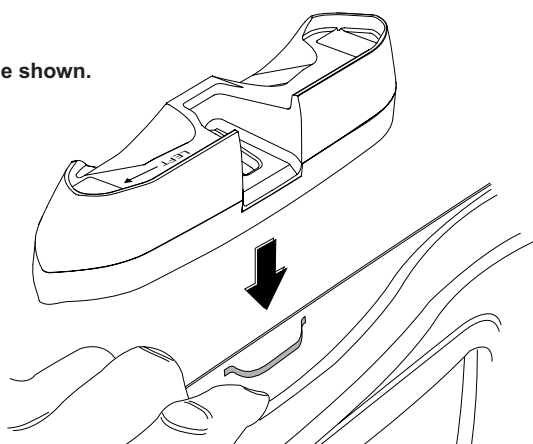


Locate the Front and Rear metal lugs in the roof gutter. The **Front Lug** is **340mm** from the back edge of the windscreen rubber, the **Rear Lug** is **1010mm** from the back edge of the windscreen rubber. Open doors and gently lift and peel the rubber strip back to expose the lugs at these points.



2

LEFT side shown.



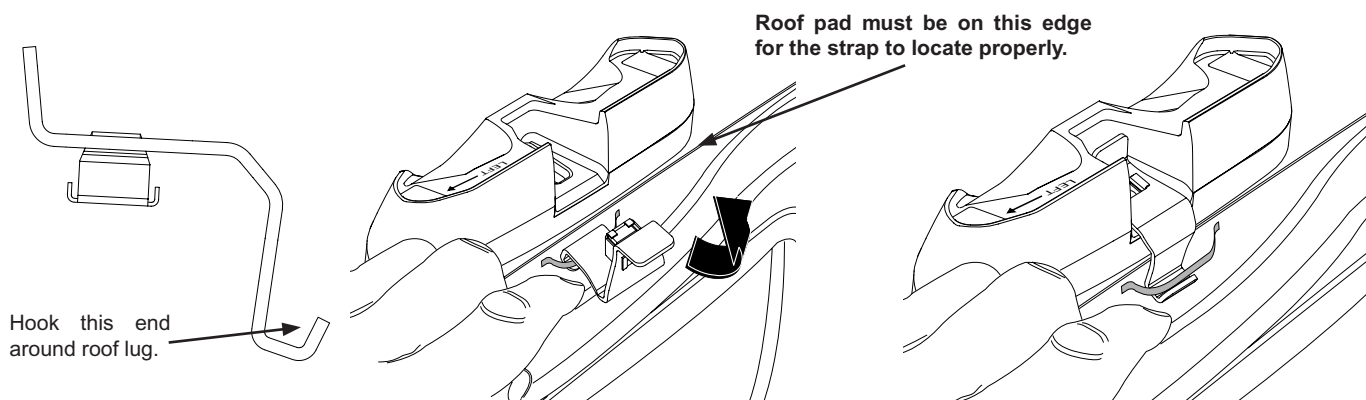
Place the correct roof pad on the roof up against the edge of the roof channel. The pads are marked **LEFT** and **RIGHT** with the **ARROW** facing towards the front of the vehicle once installed.

**RIGHT - Drivers side.**

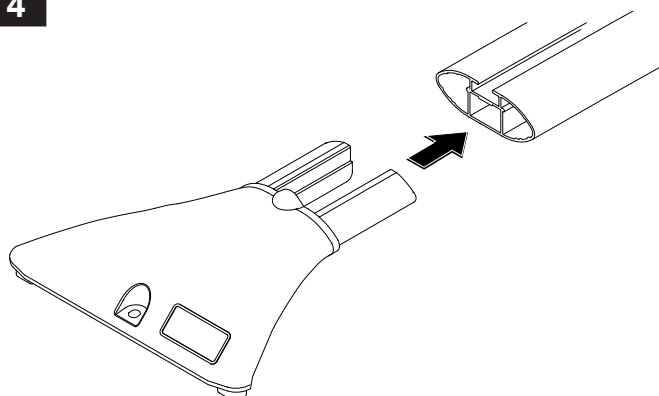
**LEFT - Passenger side.**

3

Hook the stainless steel Strap around the roof lug and rotate forward so that the cage nut on the underside locates into the cutout in the roof pad.



4

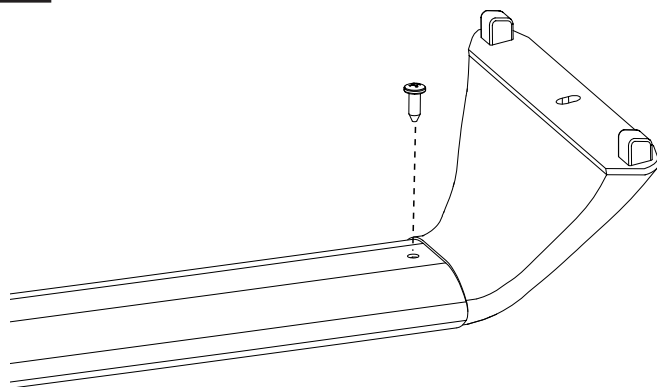


Insert the Sportz leg fully into the cross bars, a rubber mallet may be required to knock the leg in place.



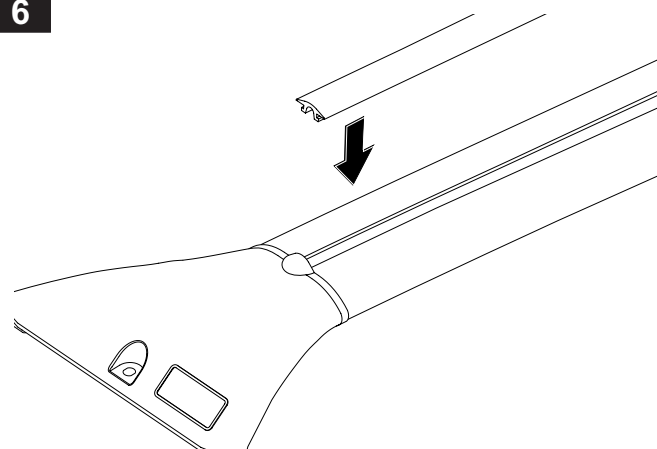
## RSS150 - SUZUKI Swift 4dr Hatchback 01/05 on

5



From the underside of the cross bar insert the phillips head screw.

6

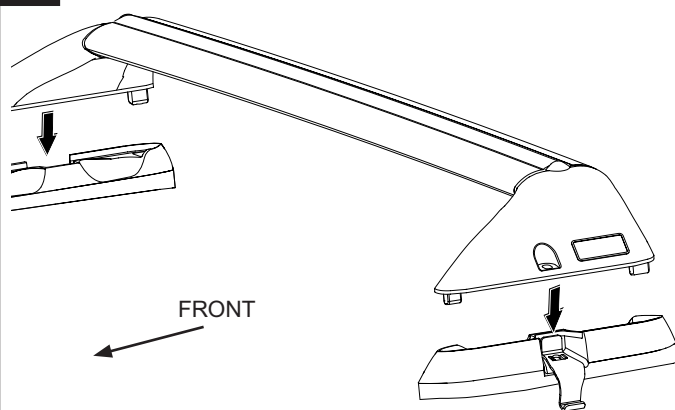


Insert the correct rubber buffer strip into the top of the cross bar.

FRONT Buffer Strip = 825mm

REAR Buffer Strip = 790mm

7

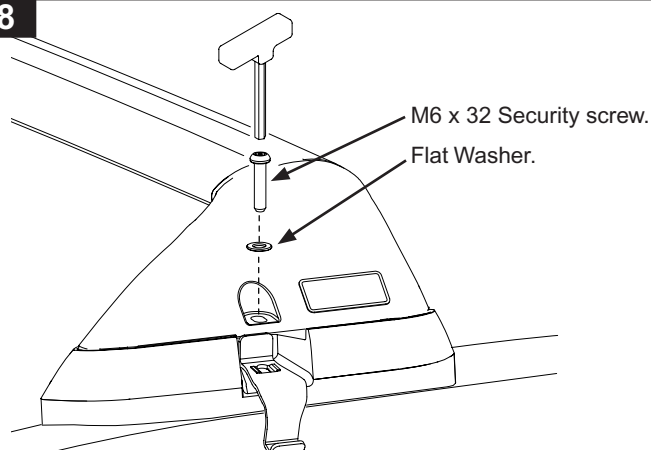


Place the assembled cross bars onto the front and rear roof pads.

FRONT Cross Bar = 825mm

REAR Cross Bar = 790mm

8



Place the flat washer over the M6 Security screw and then fasten to the stainless steel strap. **TIGHTEN TO 3-4N/m. DO NOT OVER TIGHTEN.**



## RSS150 - SUZUKI Swift 4dr Hatchback 01/05 on

### Important Information

**Maximum carrying capacity: 50kg**

#### Recommendations

It is essential that all bolt connections be checked after driving a short distance when you first install your crossbars. Bolt connections should be checked again at regular intervals (probably once a week is enough, depending on road conditions, usage, loads and distances travelled). You should also check the roof bars each time they are refitted.

Make sure to fasten your load securely. Please ensure that all loads are evenly distributed and that the centre of gravity is kept as low as possible.

**Use only non-stretch fastening ropes or straps.**

#### Sensitivity to Crosswinds, Behaviour in Curves and Braking

The handling characteristics of the vehicle, changes when you transport a load on the roof. For safety reasons, we recommend you exercise extreme care when transporting wind-resisting loads; special consideration must be taken into account when braking.

**Please remove crossbars when putting vehicle through an automatic car wash.**

#### Load Ratings

Maximum permissible load is 50kg per pair of roof racks (include the weight of the roof bars, 5kg). When roof racks are to be used in off-road conditions, please build a safety factor of 1.5 into this load limit. Although the roof racks are tested and approved to AS1235-2000, Australian road conditions can be much more rigorous. However, increasing the number of crossbars does not increase the vehicles maximum permissible roof loading.

#### Note for Dealers and Fitters

It is your responsibility to ensure instructions are given to the end user or client

Rhino-Rack  
3 Pike Street, Rydalmere,  
NSW 2116, Australia.  
(Ph) (02) 9638 4744  
(Fax) (02) 9638 4822

Document No: RS-102  
Prepared By: Craig Jones  
Authorised By: Gary England

Issue No: 01  
Issue Date: 06/03/2006

These instructions remain the property of Fetovu Pty Ltd T/as Rhino-Rack and may not be used or changed for any other purpose than intended.