



RHINO-RACK

Aerodynamic & Heavy Duty Roof Rack Systems

RBLWU - Rear Boat Loader Worm Upgrade

Place these instructions in the vehicle's glove box after installation is complete.

Important: Please read these instructions carefully prior to installation.
Please refer to your fitting instruction to ensure that the roof racks are installed in the correct locations.
Check the contents of this kit before commencing fitment and report any discrepancies

Parts List

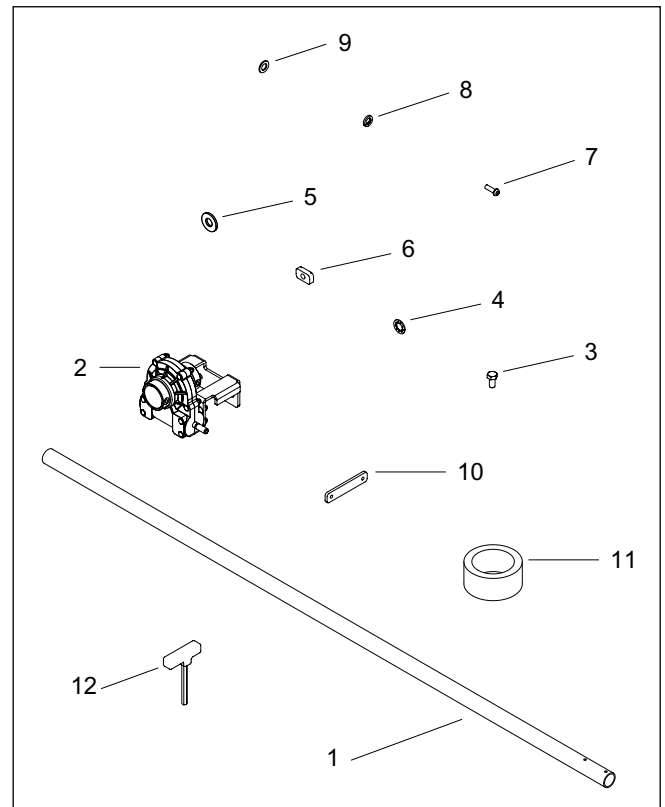
Item	Component Name	Qty	Part No.
1	RBL Worm Drive Axle	1	A390
2	Worm Drive Assembly	1	SBLK7
3	M10 x 20mm Hex Bolt	2	B003
4	M10 Shakeproof Washer	2	W021
5	M10 x 24mm Flat Washer	2	W018
6	M10 Channel Nut	2	N024
7	M6 x 20mm Security Screw	2	B062
8	M6 Spring Washer	2	W004
9	M6 Flat Washer	2	W003
10	Plate Nut	1	C396
11	Tape	1	Z016
12	Security Key	1	SECKEY-S
13	Fitting Instructions	1	RS-333

Care Instruction:

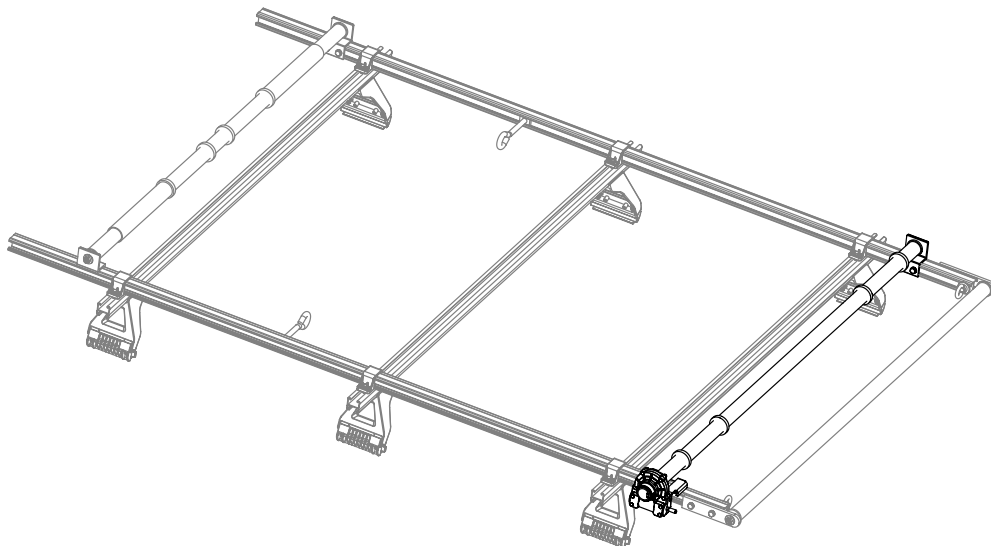
Thoroughly clean vehicle Rear Boat Loader prior to fitting the Worm Drive Upgrade.

Tools Required

5/8" Spanner, Tape Measure, Hack Saw, File.



Layout



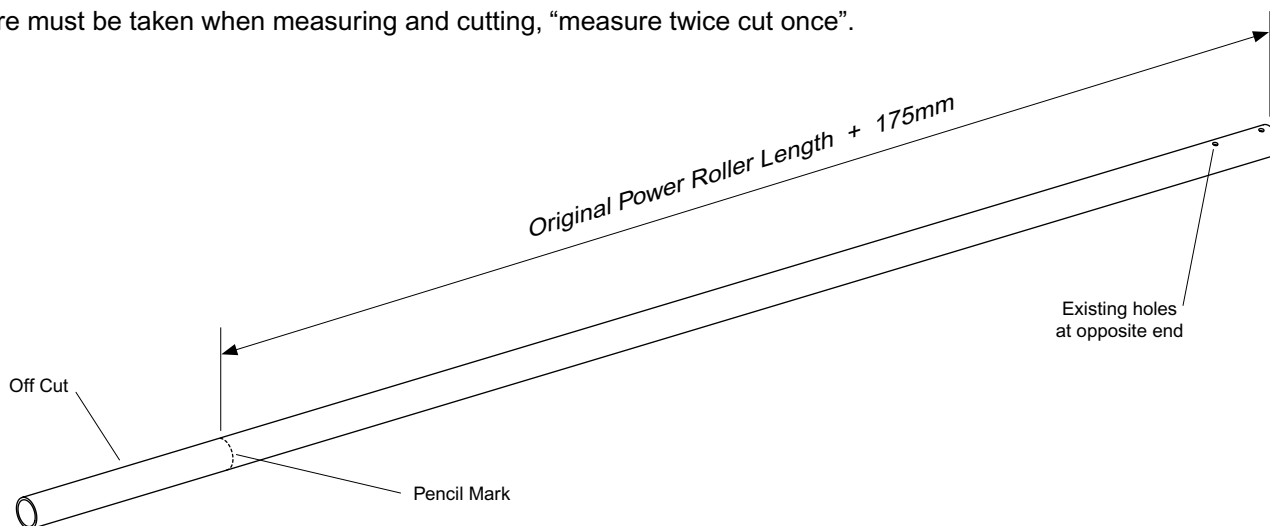
1 Remove Existing Components:

- 1a) Mark the position of the rear Roller Brackets and Power Roller Brackets to assist in re-assembly.
- 1b) Remove the ropes from the Power Roller and rear Eye Bolts.
- 1c) Release the 4 x Bolts retaining the Rear Roller Assembly and slide the Roller back until removed.
- 1d) Remove the Rear Eye Bolts by inserting a screwdriver through eye and rotating anti-clockwise.
- 1e) Release the 4 x Bolts retaining the Manual Winch and Power Roller Post (at opposite end). Slide the Power Roller back until the Winch and Power Roller are completely removed.
- 1f) Remove the Rubber Stop Rings from the Power Roller.

2 Measure and Cut the Worm Drive Axle:

Measure the length of the existing Power Roller. Proceed to measure and cut the Worm Drive Axle 182mm longer than the original Power Roller, ensuring that the existing holes at one end are not cut off.

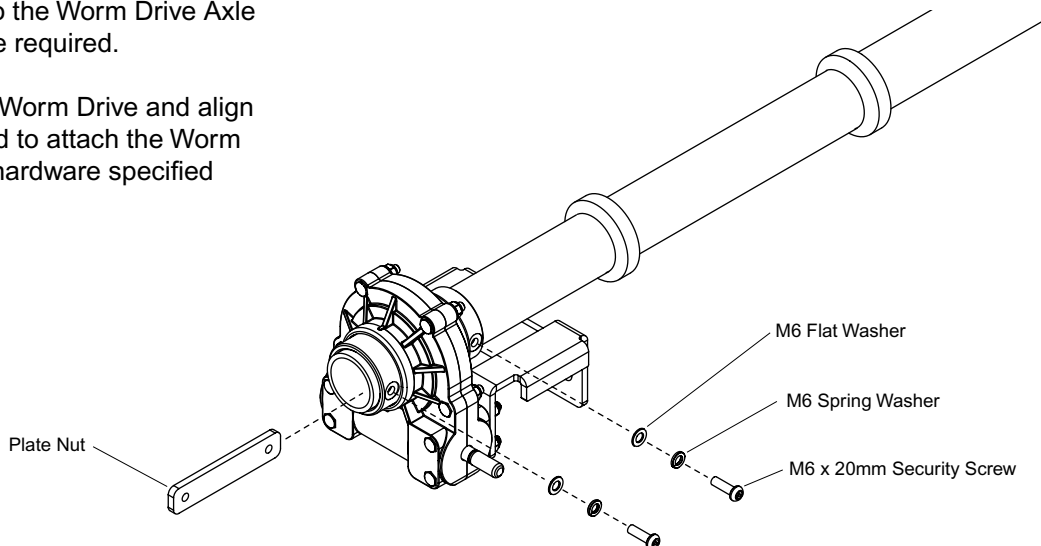
Care must be taken when measuring and cutting, "measure twice cut once".



3 Attach Worm Drive to Axle:

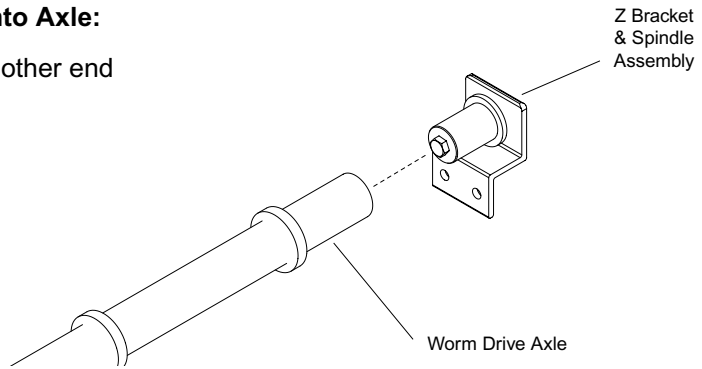
Fit the 4 x Rubber Rings to the Worm Drive Axle and position roughly where required.

Insert end of Axle into the Worm Drive and align both sets of holes. Proceed to attach the Worm Drive to the Axle with the hardware specified below.



4 Insert Z Bracket & Spindle Assembly into Axle:

Insert the Z Bracket & Spindle Assembly into the other end of the Worm Drive Axle.

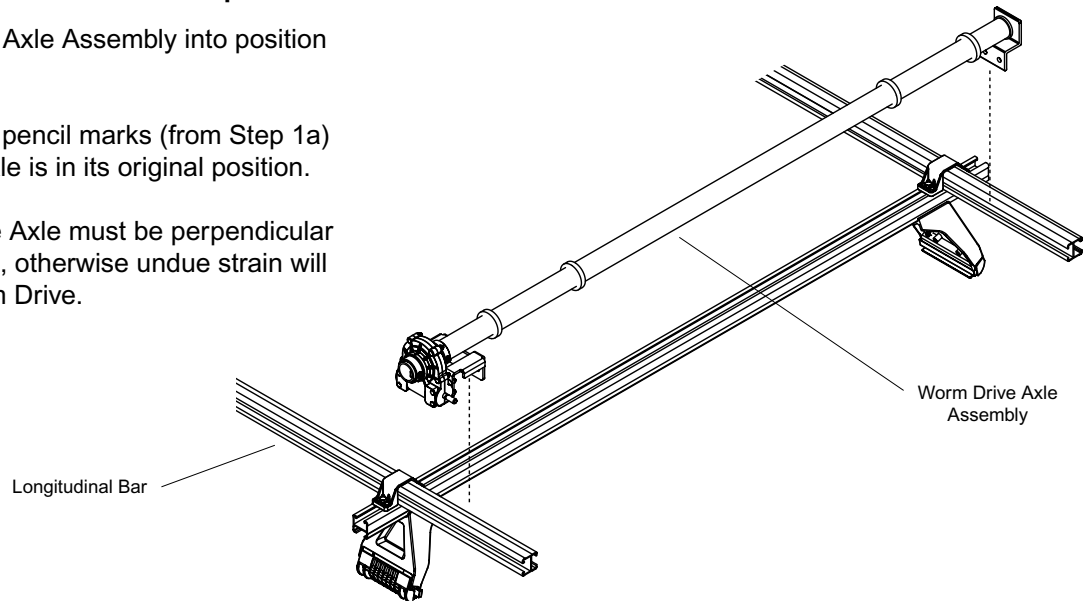


5 Lower the Worm Drive Axle into position:

Lower the Worm Drive Axle Assembly into position as detailed below.

Align the Axle with the pencil marks (from Step 1a) and ensure that the Axle is in its original position.

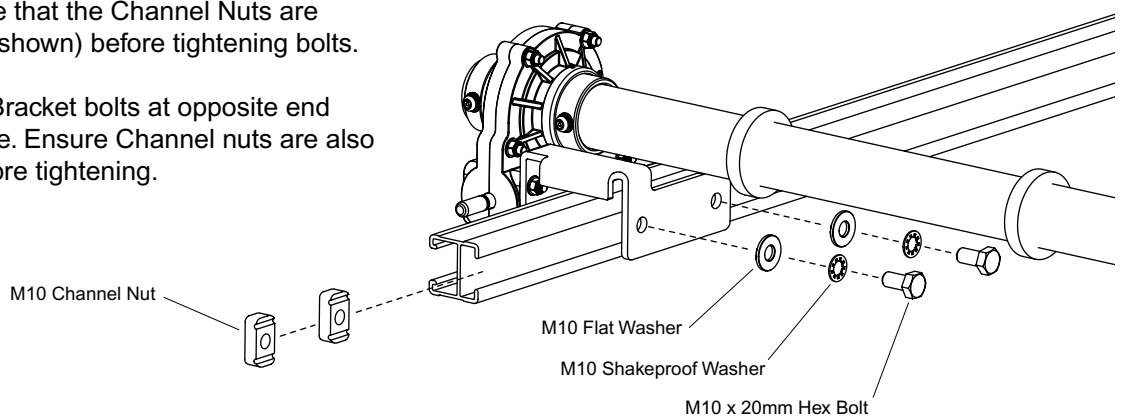
Note: The Worm Drive Axle must be perpendicular to the longitudinal bars, otherwise undue strain will be placed on the Worm Drive.



6 Fasten Worm Drive Axle in Place:

Using the hardware detailed below fasten the Worm Drive in place. Ensure that the Channel Nuts are vertically aligned (as shown) before tightening bolts.

Proceed to fasten Z Bracket bolts at opposite end with existing hardware. Ensure Channel nuts are also aligned vertically before tightening.



7 Attach Original RBL Components:

7a) Fit the 2 x Eye Bolts into their original position and fasten in place with a screwdriver.

7b) Attach the Rear Roller Assembly to its original position and fasten with original hardware.

7c) Attach the Ropes as previously installed, refer your Rear Boat Loader Instructions for details.

Important Information

Recommendations

It is essential that all bolt connections be checked after driving a short distance when you first install your Rhino Rack accessory. Bolt connections should be checked again at regular intervals (probably once a week is enough, depending on road conditions, usage, loads and distances travelled). You should also check the roof bars and accessories each time they are refitted.

Make sure to fasten your load securely. Please ensure that all loads are evenly distributed and that the centre of gravity is kept as low as possible.

Use only non-stretch fastening ropes or straps.

Please remove crossbars when putting vehicle through an automatic car wash.

Sensitivity to Crosswinds, Behaviour in Curves and Braking

The handling characteristics of the vehicle, changes when you transport a load on the roof. For safety reasons, we recommend you exercise extreme care when transporting wind-resisting loads; special consideration must be taken into account when braking.

Load Ratings

Refer to vehicle manufactures carrying capacity for roof bars. When roof racks are to be used in off-road conditions, please build a safety factor of 1.5 into this load limit. Although the roof racks are tested and approved to AS1235-2000, Australian road conditions can be much more rigorous. However, increasing the number of crossbars does not increase the vehicles maximum permissible roof loading.

Note for Dealers and Fitters

It is your responsibility to ensure instructions are given to the end user or client

Rhino-Rack
3 Pike Street, Rydalmere,
NSW 2116, Australia.
(Ph) (02) 9638 4744
(Fax) (02) 9638 4822

Document No: RS-333
Prepared By: Nigel Greig
Authorised By: Geoff Cropley

Issue No: 01
Issue Date: 10/01/2008

These instructions remain the property of Rhino Rack Australia Pty Ltd and may not be used or changed for any other purpose than intended.